



Saturday 21st September  
10:30am

# FARM MACHINERY DISPERSAL SALE

On Behalf of Mullock & Co  
at Bradley Hall, Bradley, Whitchurch, Shropshire SY13 4RA

Tractors, Trailers, Farm Machinery,  
Farm Equipment & Sundries

Find us on 

 **MartEye**

[www.marketdraytonmarket.co.uk](http://www.marketdraytonmarket.co.uk) | [enquiries@barbers-auctions.co.uk](mailto:enquiries@barbers-auctions.co.uk) | 01630 652926

## AUCTIONEERS REMARKS & STIPULATIONS

Market Drayton Market Ltd are favoured with instructions from Anthony Mullock & family to hold a farm dispersal sale at Bradley Hall.

- PRE-SALE** Pre-sale enquiries may be made to the Auctioneer's Office at Market Drayton Market 01630 652926 or visit the website at [www.marketdraytonmarket.co.uk](http://www.marketdraytonmarket.co.uk)  
Auctioneer - Jonty Cliffe - 07595 453306.  
Vendor - Anthony Mullock - 07905 277058  
Sale day office phone 07956 228495.
- VAT** The vendors are registered for VAT purposes and at the standard rate will be charged in addition to the hammer price where applicable.
- CATERER** A caterer will be in attendance to serve light refreshments.
- CONDITIONS OF SALE** The Auctioneers' usual conditions of sale will apply and will be posted on the day of the sale.
- TERMS OF SETTLEMENT** **All accounts to be settled on the day either by cash or debit/credit card** or bank transfer into our NatWest—Market Drayton Market Limited T/A. Barbers Auctions Client A/C. Sort code 01-05-48/Account Number 40093239. Anyone wishing to pay by cheque not known to Market Drayton Market Ltd must obtain a Bankers Reference or make suitable prior arrangement. Auctioneers reserve the right to withhold goods until cheques are cleared.
- EXPORT OF GOODS** Any Lot purchased at Auction may be subject to export restrictions or may require a licence for export out of the United Kingdom. The Buyer is responsible for obtaining any licences which may be required (including any licence that may be required for import onto the destination country). The delay or denial of any such licence will not be grounds for the Buyer to cancel any purchase.
- BUYERS PREMIUM** All purchases will be subject to the following buyers premium of 5% with a minimum of £1 and a maximum of £250
- ONLINE BIDDING** Bidding will be available on Marteye website or mobile app. Additional 1% charge for online purchases. [www.marteye.ie](http://www.marteye.ie)



## CATALOGUE

**Sale to commence at 10:30am prompt**

**THE CATALOGUE IS COMPRISED FOR DESCRIPTION PURPOSES ONLY AND  
MAY DEVIATE FROM THE ORDER OF SALE.**

Whilst statements given in this catalogue are believed to be correct to the best of the vendor's knowledge, no warranty is given or implied.

**VIEWING: Friday 20th September from 1pm-4pm or  
on the day of the sale from 9am.**

### **TOOLS, EQUIPMENT & SUNDRIES**

- 6ft UPVC Window
- Qty of Traditional Bluet Set House Bricks
- Stainless Steel Catering Bench
- Traditional Cast Iron Range
- Vintage Seeder
- Qty Pallet Racking
- 10 inch Quarry Tiles
- Qty of Timber & Wooden Sleepers
- Qty of Traditional Oak Beams
- Wooden Round Table (8ft Diameter)
- 3 x Wooden Log Baskets
- 2 x Airtech 4000/1 Compressor
- 9 inch Drainage Bucket
- 2ft Digging Bucket
- 4ft Ditching Bucket
- Teagle Tip Mix Cement Mixer
- Electric Belle Cement Mixer
- Slingsby Triple Ladder



- Qty of Stainless Steel Washers & Bolts
- Qty of Brass Nuts & Bolts
- Qty of Stainless Jubilee Clips
- 1400L Fuel Tank c/w Pump & Filter
- Bunded & Steel Diesel Tanks
- Vintage Tools & Lamps
- Milwaukee V28 Impact Gun
- Stihl FS45 Strimmer
- Homelite ST385 Strimmer
- Parimeter Cutting Saw
- Electric Winch
- 2 x Lister D Engines
- Amanco Stationary Engine
- Petter Engine
- Various Engines & Gearboxes
- Engine & Saw Bench
- Qty of Chains
- Qty of Acro Props
- Qty of Sandstone
- Lorry Body 8ft x 18ft
- Prestcold Single Phase Bull Tank Compressor





## AGRICULTURAL EQUIPMENT & SUNDRIES

- 14"6 Diagonal Barrier & Feed Trough
- Vintage Horse Drawn Plough & Scuffler
- 3 x 10ft Diagonal Barrier & Feed Trough
- 6 x Calf Hurdles
- IAE Calf Crush
- Qty of Various Length Gates
- Millward & Keeling 15ft Feed Bunker
- Calf Hutch (for 5 Calves)
- 30ft Cattle Race with Self Locking Yoke
- Watson Creep Feeder
- Standing Hay & Corn Trough
- Wydale 5 Teet Calf Feeder
- Qty of Sheep Netting
- Qty of Cow Brushes
- Sheep & Cattle Footbaths
- GHL Sheep Scales
- Qty of Stone Troughs
- Qty of Modular Chicken Crates



## TRAILERS

- AS Marston 6T Dump Trailer
- 22ft Bale Trailer
- Bateson 8ft Livestock Trailer
- Ifor Williams 12ft Plant Trailer c/w Dropsides
- 16ft Watson Feed Trailer
- FW Pettit 4T Tipping Trailer
- 2 x Car Trailers



## AGRICULTURAL MACHINERY & IMPLEMENTS

- 6ft Quicke Bucket with euro brackets
- Pallet Forks with euro brackets
- Opico 6m Grass Harrow
- Pottinger 265 HED Mower Conditioner
- 2011 Krone AM203S Easy Cut Mower
- 10ft Dutch Harrows
- Perfect 8ft Belt Drive Topper
- Fleming 5ft Topper
- 8ft Spring Tine Cultivator
- 6ft Muck Fork
- Browns Yard Scraper
- 2 x David Brown Plough
- Vintage Straw Chopper
- Browns Bale Squeeze c/w Euro Brackets
- 4ft Muck Grab c/w Euro Brackets
- Twose 10ft Flat Roller
- Albion Finger Bar Mower



## TRACTORS, DIGGERS, ATV

- Polaris Ranger Diesel (DX14 HLC)
  - ◇ Full service
  - ◇ 338 hours
- JCB 2CX Street Master Backhoe Loader (N919 OFP)
  - ◇ Extra Dig, Quick Hitch Front & Rear
  - ◇ 7,849 hours
- Case CS105 Pro Tractor c/w MXU8 Loader (GX09 KNL)
  - ◇ 5,463 hours
  - ◇ Front Tyres Alliance 380/70R28
  - ◇ Rear Tyres Kelebar 480/70R38
- Iveco Cargo Horse Box (NF68 JWT)
  - ◇ No Tax or MOT
  - ◇ Runs but Mileage Unknown
- Yamaha 125 Grizzly 2WD Quad Bike
- David Brown 880 Tractor





Find us on:  
facebook



MartEye

## PRODUCE

- 70 x Round Silage Bales (Cut in September 2023)

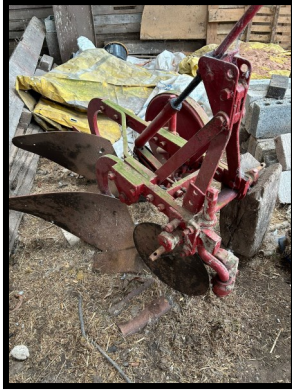
## INSERTED LOTS

BY KIND PERMISSION

- 2023 Grizzley 700R Log Splitter
- 800m Pipe & Reeler
- Honda Quad Bike
- Compressor with MF135 Engine
- 5m Dribble Bar
- 3 Prong Spike
- Ford 4600 (EUX 833V) No VAT
- Diesel Tank c/w Pump
- Qty of Modular Chicken Crates
- Suzuki SJ413 Samurai with Rock Lobster Gear Box
- 4 Ton Winch









Jonty Cliffe

07595 453306

Office Number

01630 652926

Dispersal Sale Number

07956 228495



Market Drayton Market LTD

The Agricultural Centre, Adderley Road, Market Drayton TF9 3SW